



NOW WITH AN ADDED ADVANTAGE - TALLY'S POWER OF SIMPLICITY!

Tally (India) Private Limited

Regional Offices:

- Ahmedabad: 9327115011 • Bangalore: 080-30282559; 30916409 • Bhopal: 9300890044
- Chandigarh: 9356268858; 0172-3200068/69 • Chennai: 044-42315231/32/33/34/35
- Cochin: 0484-3201490; 3208175 • Coimbatore: 0422-3204014/15/18
- Delhi/NCR: 011-26282557/58/59; 26228498/99; 26233690/91 • Guwahati: 9864206717
- Hyderabad: 040-32002131/32/37 • Kolkata: 033-39593664/65/66; 22851071/72
- Lucknow: 9335533431; 0522-3200323 • Mumbai: 022-56925230/31/32/33
- Pune: 9326945700 • Ranchi: 9334778788.

TallyMail: tallydirect@tallysolutions.com TallyWeb: www.tallysolutions.com



Tally POWER OF SIMPLICITY

Shoper - Comprehensive Solution For Increased Profitability

Shoper is a state-of-the-art retail management software from Tally (India) Private Limited that offers retailers like you, a variety of solutions to manage your business growth. This end-to-end solution caters to every aspect of your retail business; right from billing, inventory, merchandising and pricing to barcode generation, stock transfer, taxation and customer database! Helping you keep a finger on the pulse of your retail enterprise and its operations in real time. Thus ensuring increased transparency while reducing operating costs and boosting productivity!

Shoper comes with an inventory management system that gives you complete control over your inventory. This helps you manage your working capital better by ensuring optimum inventory levels, so that you never lose a sale due to out-of-stock situations or over-stock slow moving items.

What's more, Shoper works in conjunction with Tally to give you a complete business solution... easily, efficiently and cost effectively!

Powerful POS Module For Automated Sales

Shoper POS is a comprehensive feature that allows you to view all your products, inventory, customer records and buying history at your retail outlet! It archives and provides information in real-time, so that critical decisions can be taken based on accurate data. What's more, it empowers you with advantages like flexible item identification, accurate billing and profitability control. It also helps monitor optimum ordering levels and provides end-of-day reports on stock, cash and sales.

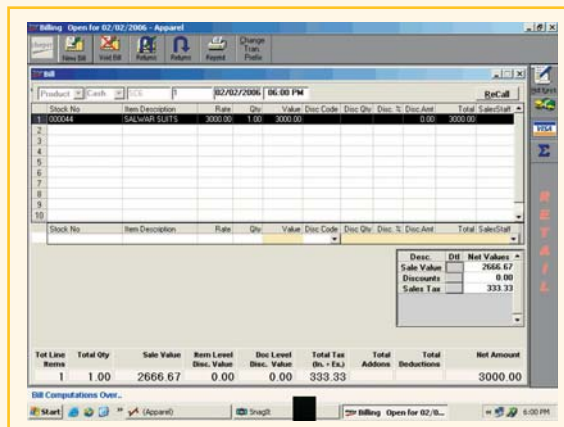
Shoper Enterprise

If you have more than one retail outlet that needs to be monitored and controlled at the same time, the POS module can be complemented with Shoper Enterprise. This module is designed to help you achieve greater control - thanks to consolidated MIS reports - and aids you in better and quicker decision making.

A Study In Simplicity

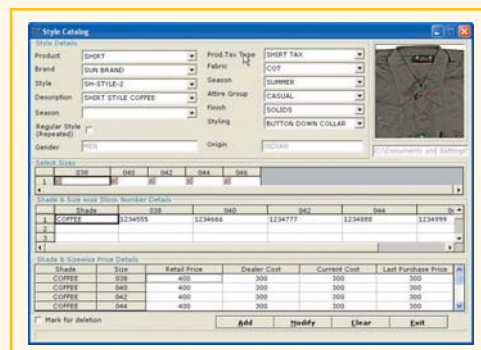
Shoper allows you to keep a finger on the pulse of all aspects of your retail enterprise at the press of a button. It's that simple! Take a look at the following screenshots to see for yourself how easy-to-use the Shoper interface is.

Fast And Accurate Billing

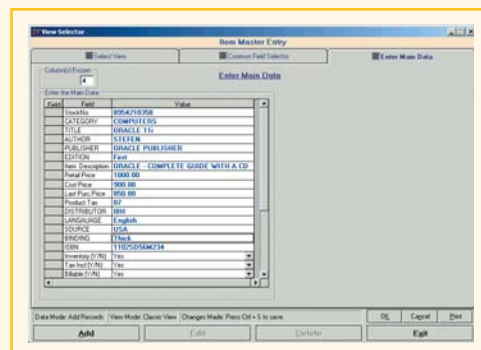


- ◆ Capture customer details
- ◆ Accept different salesman codes both at bill and item level
- ◆ Give customer specific and general discounts at bill level
- ◆ Give item level discount
- ◆ Browse facility both for customer and item selection
- ◆ Barcode scanning for the items to speed up billing
- ◆ Multi-payment modes for the same bill.

Adaptable To The Kind Of Products You Sell



Apparel Store



Book Store

Salient Features	Benefits
Twelve Product Classifications Dual Representation Using Stock Number Barcode Generation	<ul style="list-style-type: none"> ▪ Browse items using either the stock number or product classification ▪ Easily scan items while billing, stock taking, preparing goods inwards and outwards ▪ Effective analysis of sales, stock, merchandise ▪ Aids in stocking the right product and charting out business plans ▪ Size-Colour Matrix available
Speed Of Billing Use Of Sales Advice Slips	<ul style="list-style-type: none"> ▪ Prepare bills instantly ▪ Centralise cash counter even while having multiple billing counters. Give customers Advice Slips made at any counter on any floor of the showroom (they can be produced at the cash counter where the final bill is made, to spare the inconvenience of carrying goods while shopping)
Operational Controls	<ul style="list-style-type: none"> ▪ Deal with old stock efficiently. Decide on different discount structures depending on the age of the goods ▪ Discount Given Report shows the effects of seemingly nominal discounts ▪ Customer Off Take report helps in knowing the buying patterns of customers
Tracking Mark-Up	<ul style="list-style-type: none"> ▪ Reporting of mark-up percentage during the process of goods inwards itself helps to know if the goods are sent at the promised price, so that the margin is protected
Cross Docking At The Warehouse	<ul style="list-style-type: none"> ▪ Goods received at the Head Office for any of its chain store can be cross docked as goods outwards. The transaction file with the details of items received gets created, which can be loaded at the store to avoid repetition of entry and errors ▪ Huge time saver, especially during festival seasons
Perpetual Inventory	<ul style="list-style-type: none"> ▪ No more late night shifts or shop closure for stock audit. Stock audit can be a planned activity carried out during business hours, easily and quickly
Export Reports To Ms Excel	<ul style="list-style-type: none"> ▪ Use the strengths of universally accepted spreadsheet from Microsoft
The Enterprise Advantage	<ul style="list-style-type: none"> ▪ A new store, which is part of a chain store, can start its operations within a lead time of 30 minutes, thanks to the Shoper interface of the Enterprise module ▪ Assured uniformity of information across the chain with respect to item attributes, price, discount and taxation ▪ Sales and stock information on demand at the Head Office
Tally Interface For Financial Accounting	<ul style="list-style-type: none"> ▪ The online interface with Tally gives you the best of both worlds - operational efficiency of Shoper and flexibility of the Tally Business Accounting Software

Shoper Caters To Segments Like:

- ◆ Apparel & Fashion ◆ Art & Handicrafts ◆ Beauty & Supplies ◆ Bed Bath & Linen ◆ Bicycle Shops ◆ Book Stores ◆ Children's Stores ◆ Consumer Electronics ◆ Computer & Accessories ◆ Fashion Jewellery ◆ Footwear ◆ Gifts, Novelty & Party Supplies ◆ Leather Goods ◆ Maternity Needs ◆ Music ◆ Office Stationery ◆ Pet Supplies ◆ Sarees & Dress Materials ◆ Sporting Goods ◆ Textiles ◆ Toys & Games... and many more!

Some Of Shoper's Clients Nationwide:

- ◆ adidas ◆ Allen Solly ◆ And Design ◆ Arrow ◆ Carbon ◆ Century Cotton ◆ Clarks ◆ Cotton World ◆ Dockers ◆ Espirit ◆ Excalibur ◆ Gold Souk ◆ Identiti ◆ Inc. 5 ◆ Indigo Nation ◆ Jockey ◆ Lee ◆ Levis ◆ Louise Philippe ◆ Monte Carlo ◆ Nike ◆ Park Avenue ◆ Pepe Jeans ◆ Peter England ◆ Raymonds ◆ Reebok ◆ Regal Shoes ◆ Scullers ◆ Soles ◆ Sports Station ◆ Sprandi ◆ Tommy Hilfiger ◆ Van Heusen ◆ Wearhouse ◆ Wrangler... just to name a few!



Shoper has been perfected over a 15-year period of continuous innovation and is now presented by Tally (India); adding the Power of Simplicity to its features and usage. Can't wait to leverage on the incredible advantages of Shoper? Visit www.tallysolutions.com today for more details!